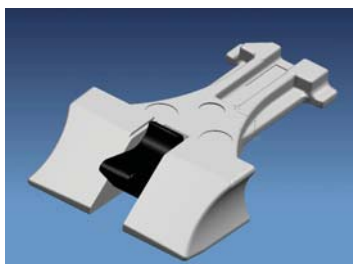




The split lever solid spindle bar is required when the W-TS Door lock is used as a standard lever function door lock, to reduce the handle force.

- SLS6555 Spindle Bar 65/55mm for PVC Doors
- SLS5050 Spindle Bar 50/50mm for Timber Doors

Note: The spring must be fitted on the inside face of the door.



EXT Latches for Split Spindle Door Locks

- 201378 35mm
- 201379 40mm
- 201380 45mm

In order that the split spindle function operates on outward open doors it is necessary to change the latch, as the latch automatically reverses the split followers.