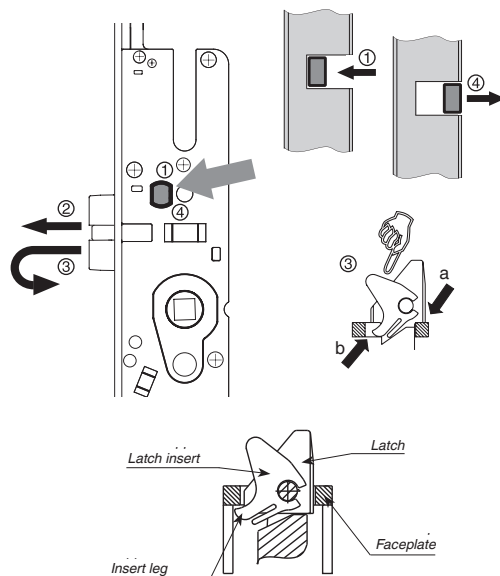




MACO PROTECT

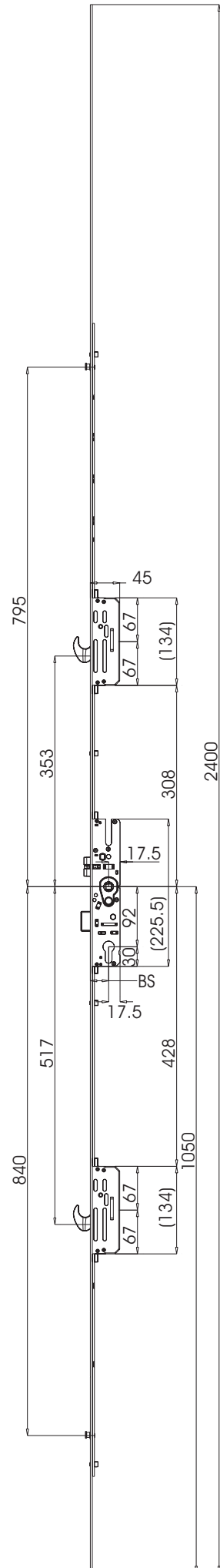
DOOR LOCKS
W-TS NEW
SPLIT SPINDLE DOOR LOCK



- ① Push the Button.
- ② Remove the latch.
- ③ Reverse the latch and replace it into the faceplate slot (a).
Ensure that the leg on the latch insert locates under the faceplate (b).
Then push the latch fully in.
- ④ Ensure that the button fully returns.

Note: The latch supplied with the lock is for inward opening doors. The setting for the split followers is automatically done upon reversal of the latch.

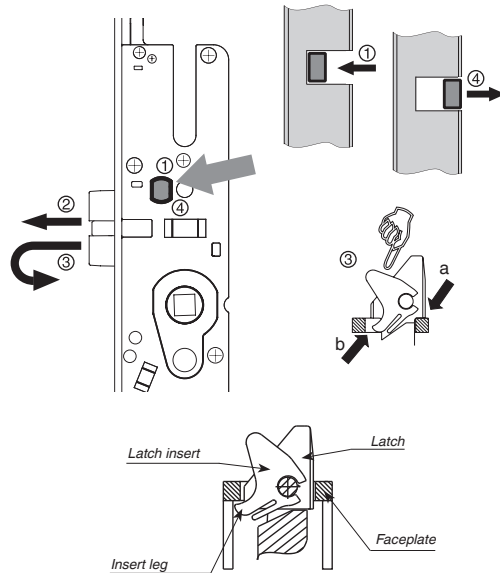
Order No.	BS (mm)	Lock Style	HC (mm)	■ (mm)
232441	35	2 x Hook 2 x i.S. Cam	92	8
232442	40	2 x Hook 2 x i.S. Cam	92	8
232443	45	2 x Hook 2 x i.S. Cam	92	8





MACO PROTECT

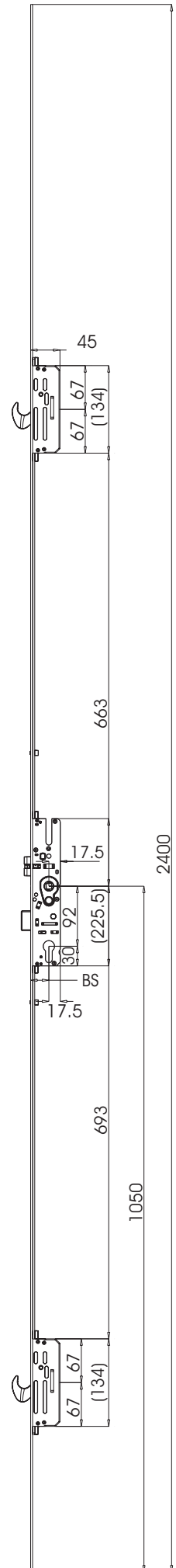
DOOR LOCKS
W-TS NEW
SPLIT SPINDLE DOOR LOCK



- ① Push the Button.
- ② Remove the latch.
- ③ Reverse the latch and replace it into the faceplate slot (a).
Ensure that the leg on the latch insert locates under the faceplate (b).
Then push the latch fully in.
- ④ Ensure that the button fully returns.

Note: The latch supplied with the lock is for inward opening doors. The setting for the split followers is automatically done upon reversal of the latch.

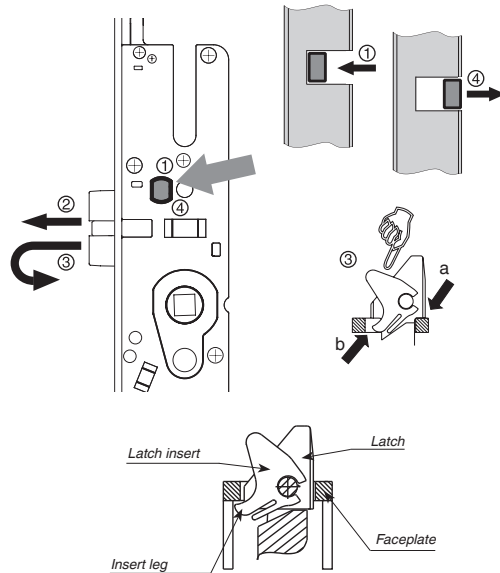
Order No.	BS (mm)	Lock Style	HC (mm)	■ (mm)
232461	35	2 x Hook	92	8
232462	40	2 x Hook	92	8
232463	45	2 x Hook	92	8





MACO PROTECT

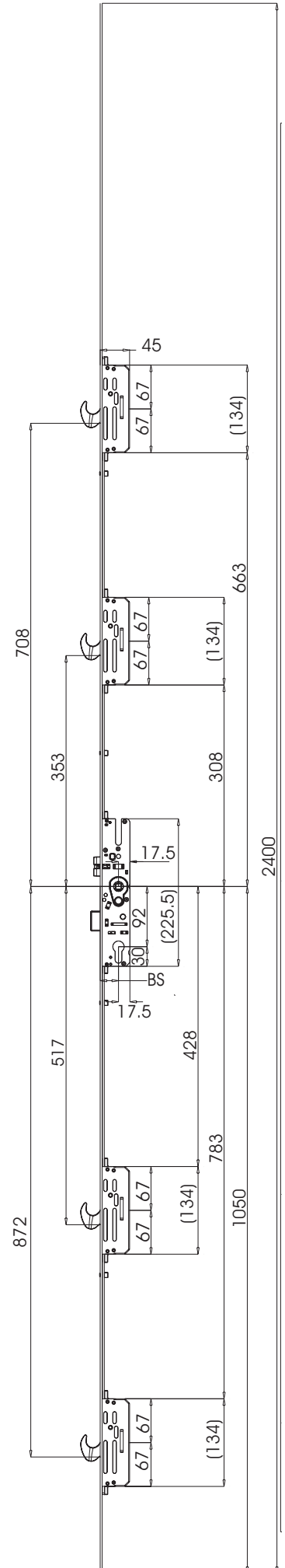
DOOR LOCKS
W-TS NEW
SPLIT SPINDLE DOOR LOCK



- ① Push the Button.
- ② Remove the latch.
- ③ Reverse the latch and replace it into the faceplate slot (a). Ensure that the leg on the latch insert locates under the faceplate (b). Then push the latch fully in.
- ④ Ensure that the button fully returns.

Note: The latch supplied with the lock is for inward opening doors. The setting for the split followers is automatically done upon reversal of the latch.

Order No.	BS (mm)	Lock Style	HC (mm)	■ (mm)
232451	35	4 x Hook	92	8
232452	40	4 x Hook	92	8
232453	45	4 x Hook	92	8

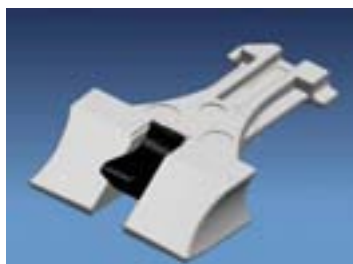




The split lever solid spindle bar is required when the W-TS Door lock is used as a standard lever function door lock, to reduce the handle force.

- SLS6555 Spindle Bar 65/55mm for PVC Doors
- SLS5050 Spindle Bar 50/50mm for Timber Doors

Note: The spring must be fitted on the inside face of the door.



EXT Latches for Split Spindle Door Locks

- 201378 35mm
- 201379 40mm
- 201380 45mm

In order that the split spindle function operates on outward open doors it is necessary to change the latch, as the latch automatically reverses the split followers.