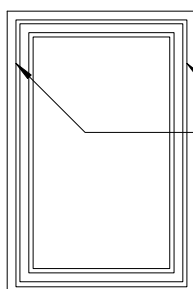
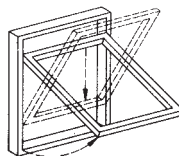


PN UNI SYSTEM

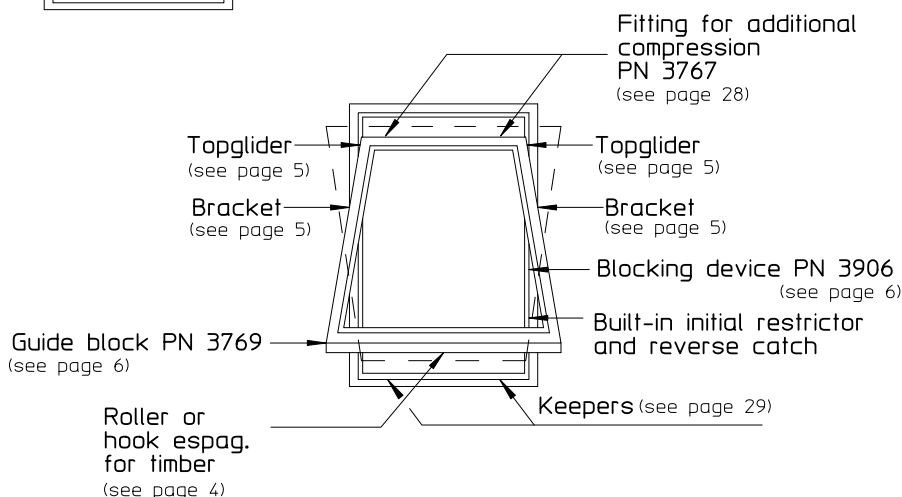
Top Swing Fitting Instruction
Reversible Hardware for Timber , -
see following pages for PVCu/Aluminium
and Composite Windows



Top Swing gearing for timber windows

Uni Top Swing gear
PN 3776 - 3799
(see page 4)

Max. sash weight for all
Top Swing gearing is 60 kg.



* The small sizes PN 3776 - 3790 has a short centre boss for easy fitting in connecting with PN 3870, 0443 and 0444 brackets

Special gearing for hotels, schools etc. The sash can be closed without operating the "PRESS" button.
Made to order only. See page 3b.

Uni Top Swing Gear										
PN no.	Sash height in mm.			F dim. mm	Gear length mm	Max. opening height cm	Stamped at the top	Special PN no.		
	Min. sash	Best choice (Gives min. overswing)	Max. sash							
* 3776	458	458 537	558	238	524	30	6	0476		
* 3790	515	537 579	615	264	580	34	6,5	0490		
3777	558	579 637	658	288	624	36	7	0477		
3791	615	637 679	715	312	680	41	7,5	0491		
3778	658	679 737	758	338	724	43	8	0478		
3792	715	737 779	815	364	780	46	8,5	0492		
3779	758	779 837	858	388	824	50	9	0479		
3793	815	837 879	915	412	880	53	9,5	0493		
3780	858	879 937	958	438	924	56	10	0480		
3794	915	937 979	1015	458	980	60	10,5	0494		
3781	958	979 1037	1058	488	1024	63	11	0481		
3795	1015	1038 1079	1115	512	1080	66	11,5	0495		
3782	1058	1079 1137	1158	538	1124	69	12	0482		
3796	1115	1138 1179	1215	564	1180	73	12,5	0496		
3783	1158	1179 1237	1258	588	1224	78	13	0483		
3797	1215	1238 1279	1315	612	1280	80	13,5	0497		
□3784	1258	1279 1337	1358	638	1324	83	14	0484		
□3798	1315	1338 1379	1415	664	1380	86	14,5	0498		
□3785	1358	1379 1437	1458	688	1424	89	15	0485		
□3799	1415	1438 1479	1515	712	1480	92	15,5	0499		
□3786	1458	1479 1537	1558	738	1524	96	16	0486		

If min. sash is used the gear must be cut and the F-dim reduced by the same amount

Jig for F-dimension is available PN 0799

□ The alu-track has been squized top and bottom in these sizes to give friction

M377691-100