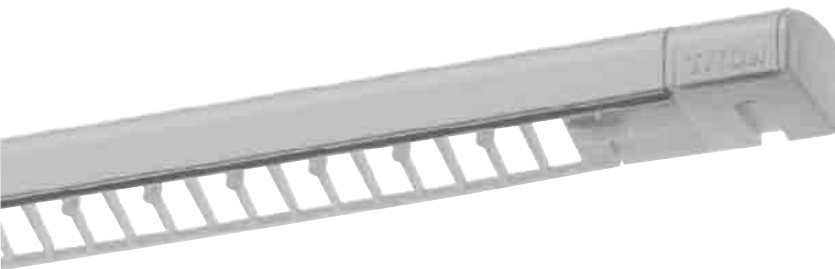


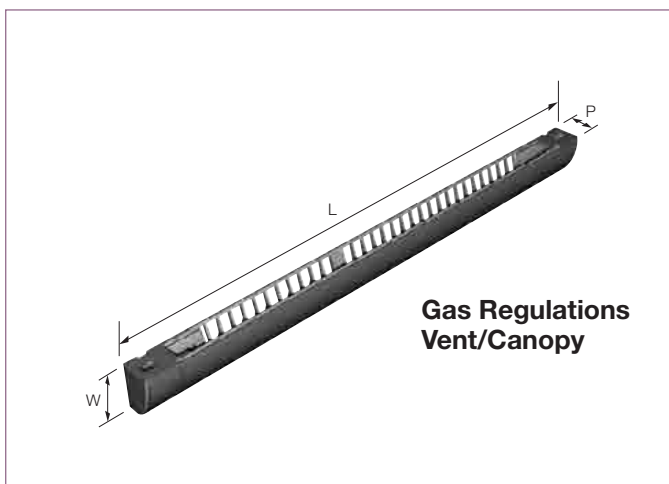
Gas Regulations Ventilator

Permanent slot ventilator



Features and Benefits

- Complies with BS 5440 Part 2 & Building Regulations Part J
- For use mounted over a 13mm or 16mm slot
- Integral screw covers for concealed fixing
- Four sizes available; 4000mm² Free Area for use with 7 to 15kW open flue boilers, 7500mm² Free Area for 15 to 22kW open flue boilers, 5000mm² for use with certain flue-less appliances.
- Two ventilators supplied per pack (one fitted internally, one fitted externally)
- Supplied with warning label, screws and fixing instructions
- PLEASE REFER TO A QUALIFIED GAS PROFESSIONAL FOR ADVICE ON CORRECT SIZING OR USAGE OF GAS REGULATIONS VENTILATORS



Performance

(Full test details available on request)
Free Area – See above.



Product	(L) Length	(W) Width	(P) Projection	EA (mm ²)	Free Area (mm ²)	Slot Detail
4000 Free Area GR Ventilator Pack	389	24	17	-	4000	
5000 Free Area GR Ventilator Pack	475	24	17	-	5000	
7500 Free Area GR Ventilator Pack	675	24	17	-	7500	
10000 Free Area GR Ventilator Pack	787	24	17	-	10000	

Orientation of ventilator varies according to slot width