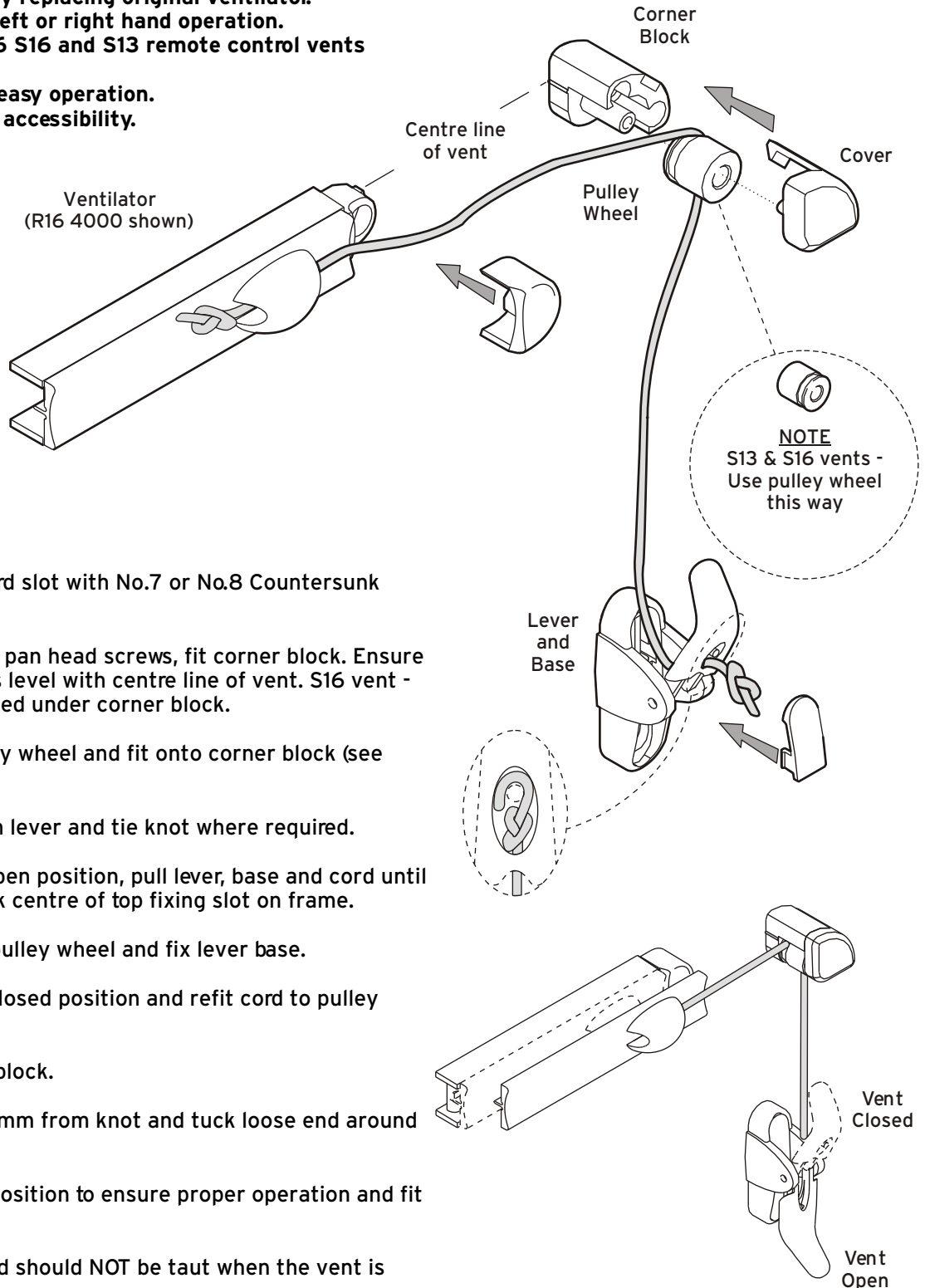


- Can be retrofitted by replacing original ventilator.
- Suitable for either left or right hand operation.
- Trimvent Select R16 S16 and S13 remote control vents are available.
- Lever designed for easy operation.
- Suitable for limited accessibility.
- Screws supplied.



1. Fit vent over standard slot with No.7 or No.8 Countersunk screws.
2. Using supplied No.6 pan head screws, fit corner block. Ensure mark on corner block is level with centre line of vent. S16 vent - always fit packer supplied under corner block.
3. Pass cord over pulley wheel and fit onto corner block (see note). Do not fit cover.
4. Thread cord through lever and tie knot where required.
5. With lever in vent open position, pull lever, base and cord until vent is fully open. Mark centre of top fixing slot on frame.
6. Remove cord from pulley wheel and fix lever base.
7. Move lever to vent closed position and refit cord to pulley wheel.
8. Fit cover to corner block.
9. Cut cord approx. 10 mm from knot and tuck loose end around pin as shown.
10. Adjust lever base position to ensure proper operation and fit screw covers.
11. Please note the cord should NOT be taut when the vent is closed!