

# Trimvent® Select Xtra S16

## Surface mounted slot ventilator



Trimvent® Select Xtra S16 Ventilator

Trimvent® Select Xtra C16 Canopy

### For use on PVCu or timber windows

Trimvent Select Xtra S16 is a surface mounted plastic slot ventilator that fits over a 16mm slot in a window and provides an Equivalent Area (EA) of 4600mm<sup>2</sup> when fitted with the XC16 canopy.

The XS16 is ideal for both new build or refurbishment situations using any window material and is available in a variety of colours.

The Xtra design improves the Trimvent Select range to offer increased ventilation giving optimum airflow (and therefore Equivalent Area) utilising existing Trimvent

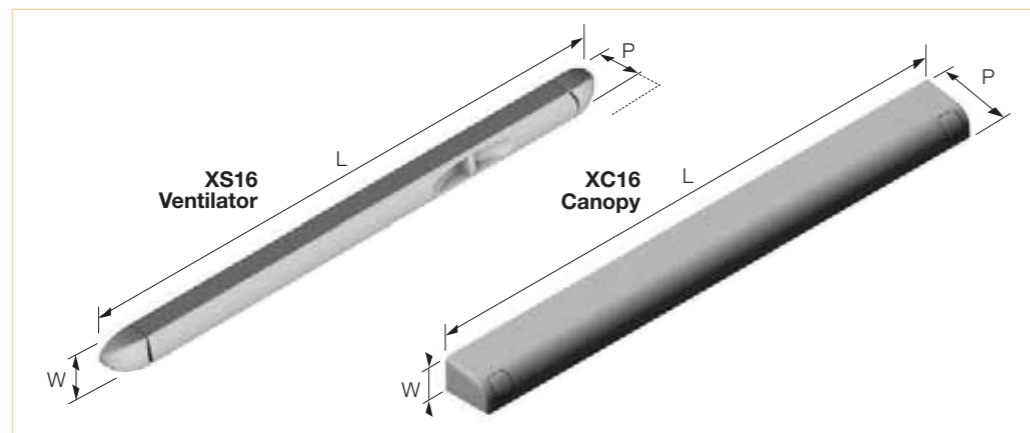
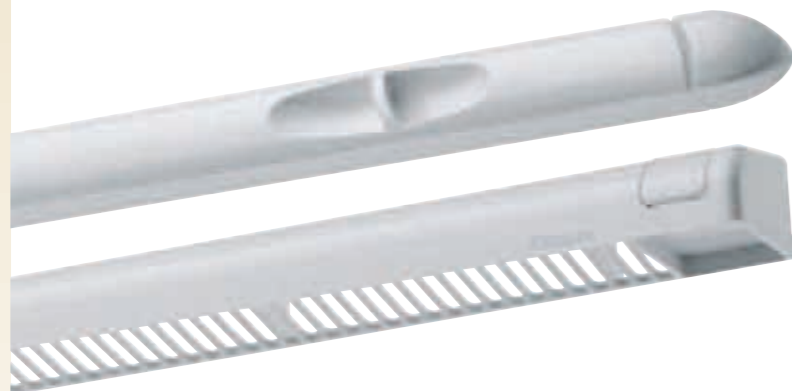
Select slot sizes and vent lengths, meaning they are 60% more efficient than previous models.

Specifically developed for recent revisions to Part F of the Building Regulations, Ventilation (England & Wales), and to improve performance for requirements throughout the UK and Europe.

Trimvent Select ventilators have been specified and fitted on millions of windows throughout the UK and mainland Europe over the last fifteen years.

### Features and Benefits

- Revised design to improve performance and Regulations compliance
- Unique occupant controllable tilting T-bar
- Rounded unobtrusive shape
- For use over 16mm slot
- Based on successful Trimvent® principle
- Sculpted finger recess
- Matching screw covers
- Patented and registered design
- Available in vent and canopy pre packs
- Sleeve available for hollow profiles
- When specified correctly complies with Building Regulations



### Details

Product	Product Code	(L) Length	(W) Width	(P) Projection Closed-Open	EA (mm <sup>2</sup> )	Free Area (mm <sup>2</sup> )	Slot Detail
XS16 4600EA vent	TS1164670	366	21 - 31	16 - 28	4600	4511	
XC16 364 canopy	TS2164040	364	22	32.5			
XS16 & XC16 4600EA pack	TS4164670						
Sleeve	Please phone for details						Please phone for details

EA figures above and marked on vents are achieved when fitted to manufacturer's recommendations. Tested in accordance with BS:EN 13141-1 (2004).

### Manufactured from

PBTP (UV Stable) & POM, Canopy - PVCu

### Recommended screws

3.5mm (No.6) Pan Head or equivalent

### Standards

Tested in accordance with BS EN 13141-1:2004 (air flow, air leakage and weather tightness)

Acoustic performance tested in accordance with BS EN ISO20140-10:1992, BS EN ISO140-10:1991 and single figures to BS EN ISO717-1:1991

### Performance

(Full test details available on request)

Equivalent Area - See above

Free Area - See above

Air Leakage (m<sup>3</sup>/hr @ 50Pa) - 2.12

Water Resistance (Pa) - 600

Acoustic D<sub>n,e,w</sub> (+/-) - vent open 31 (0;0),

vent closed 41 (-1;-2)

### Finishes

Suffix product code with:

-392 (white), -315 (brown), -496 (bright white), -662 (toffee)

### More information

enquiries@titon.co.uk / 01206 713801



Through head